



DSM USA

DES MOINES, IOWA

# ADVANCED MANUFACTURING



## LOW COST, HIGHER PROFITS

**13%**  
**LOWER**

The cost of doing business is 13% lower than the national average.  
— *Moody's Analytics*

ENERGY  
**24%**  
**LOWER**

UNIT LABOR  
**17%**  
**LOWER**

Key costs significantly lower than national average.  
— *Moody's Analytics*

**5.67¢**

The average industrial electricity rate is 5.67 cents per kilowatt-hour.

— *Edison Electric Institute*

## RECENT PROJECTS

Kreg Enterprises Inc.:  
**\$34 MILLION**

Lely North America:  
**\$16 MILLION**

Michael Foods:  
**\$85 MILLION**

Siegwerk USA Co.:  
**\$10 MILLION**

Vermeer Corporation:  
**\$118 MILLION**

## PRO-BUSINESS

**NO<sup>00</sup>**  
**TAXES**

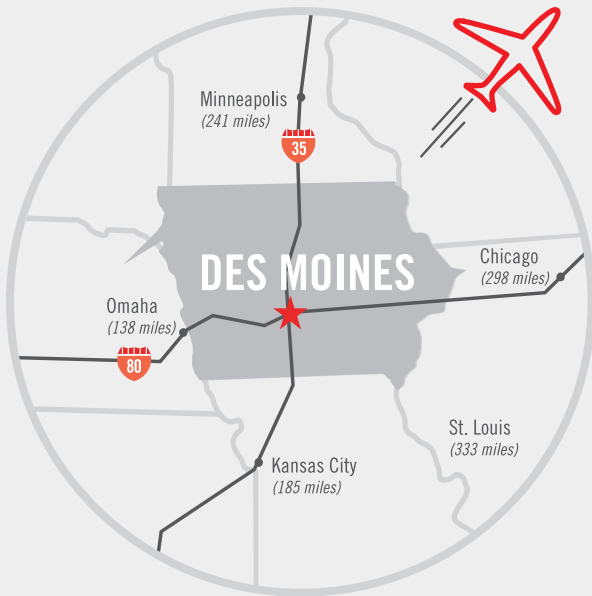
No sales, use or property tax on machinery and equipment. No sales tax on electricity or natural gas used in the manufacturing process. No corporate income tax on profits from outside Iowa.



**6.5%**

- Iowa offers a refundable 6.5% tax credit for R&D activities.
- State financial assistance.
- Local property tax abatement.

**TRANSPORTATION INFRASTRUCTURE**



- Foreign Trade Zone #107.
- Des Moines International Airport has 26 non-stop destinations, on-site customs and USDA inspectors.
- Railroads include Burlington Northern Santa Fe, Iowa Interstate, Norfolk Southern and Union Pacific.
- 350 trucking companies in the region.

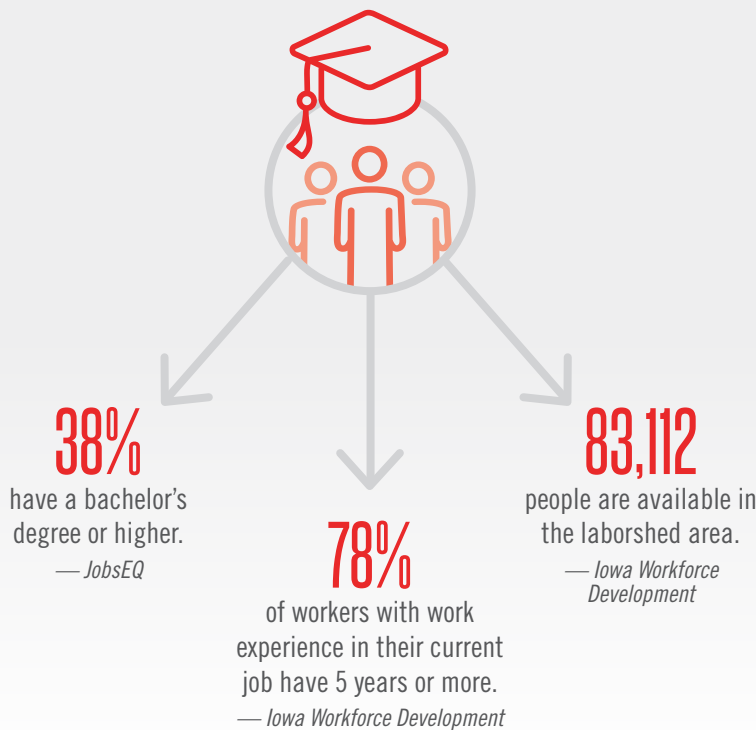
**\$4.9 BILLION**

in goods and services exported.  
— *Brookings Institution*



Crossroads of I-80 / I-35 and part of USMCA corridor.

**EFFICIENT, CAPABLE WORKFORCE**



**MAJOR MANUFACTURERS IN DSM USA**

- 3M Company
- Accumold
- Anderson Erickson Dairy
- Andersen Windows
- B&G Foods
- Bridgestone
- ColorFX
- DeeZee, Inc.
- EFCO Corp
- Emerson/Fisher Division
- JBS Swift
- John Deere Companies
- Lennox
- Pella Corporation
- Pine Ridge Farms
- Quality Manufacturing
- The Wittern Group
- Titan Tire Corporation
- TPI Composites
- Tyson
- UTC Aerospace Systems
- Vermeer Corporation
- Weiler, Inc.
- Windsor Windows & Doors

**MIKE SWESEY**

Senior Vice President of Economic Development p: (515) 286-4997 e: mswesey@DSMpartnership.com

[growDSMUSA.com](http://growDSMUSA.com) | [dataDSMUSA.com](http://dataDSMUSA.com)

